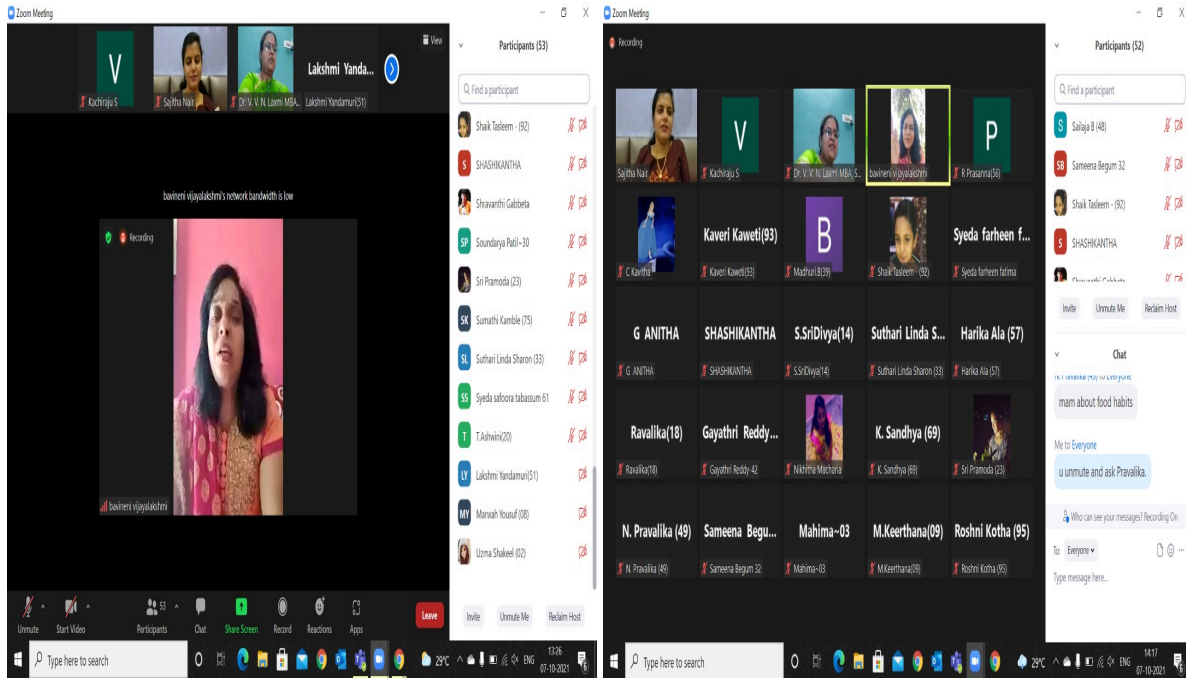


7.1.1: Measures initiated by the Institution for the promotion of gender equity during the year

Gender Equity

Guest lecture on Health Hygiene and gender sensitization against sexual harassment



As part of Azadi ka Amrit Mahotsav poster presentation and quiz competition conducted.



Staff & Students actively participated in Run for gender equality on the occasion of international women's day



143rd Birth Anniversary Celebration of Smt. Sarojini Naidu

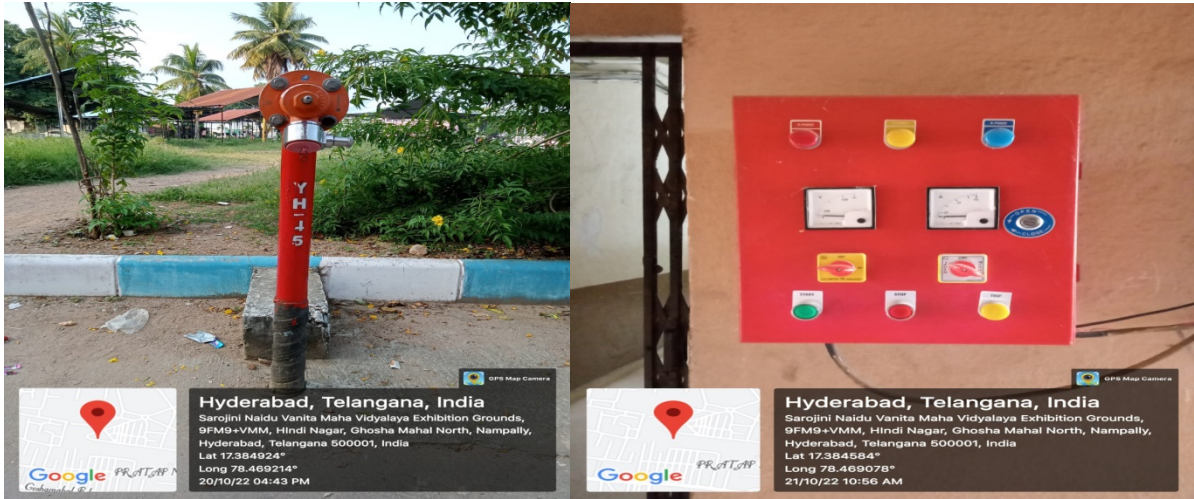


International Women's Day celebrated on 08/03/2022.



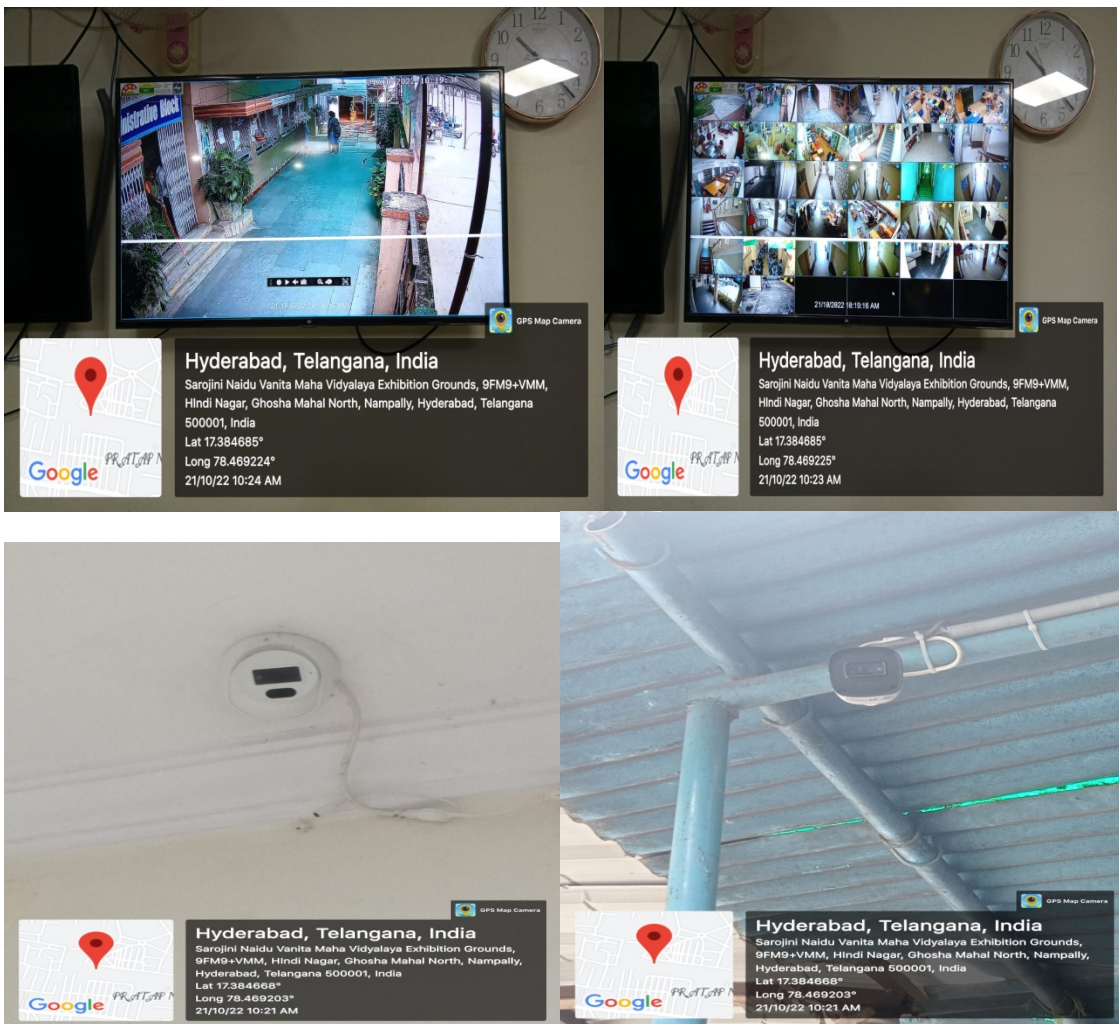
Fire extinguisher





Fire extinguisher inside and outside of the building for the safety of students and staff

CCTV cameras are incorporated to safe-guard and to promote the wellbeing of all women employees and female students of the organization.



CCTV Cameras inside and outside of the college building

Students Counselling is done through Mentor mentee relationship. Students and parents counselling is also done.



Gymnasium



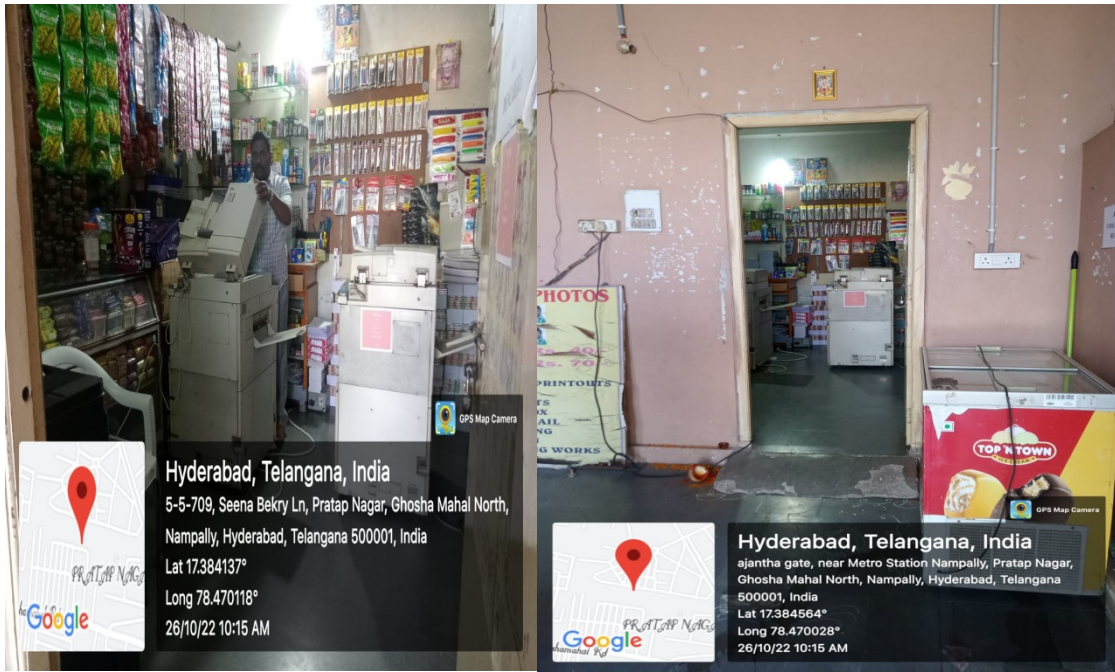
yoga classes



Playground is provided to keep up the health of the students.



General store and Stationary shop is available near the hostel to meet daily needs of the student.



Girls are provided adequate safety and security in hostel through attendance biometric security guards wardens at round.

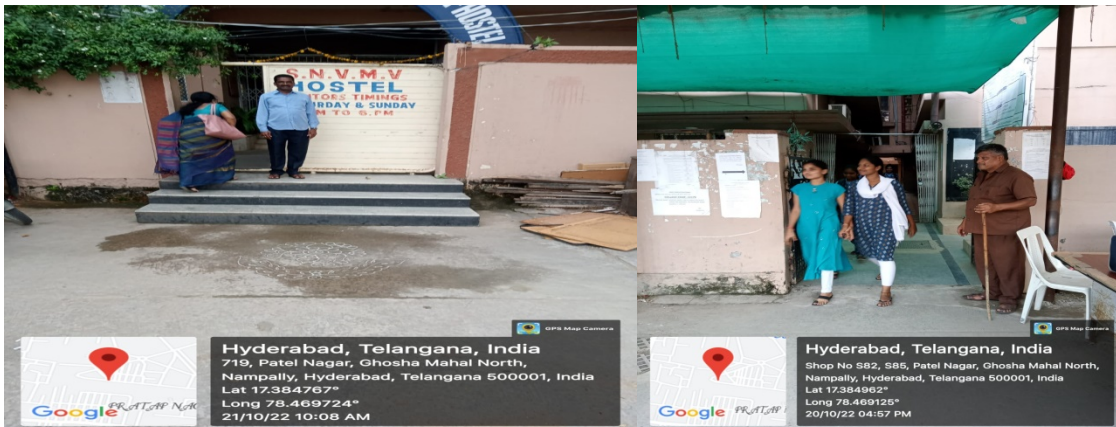


There is a two tier security in the college. One at the entrance of the campus and another at college and hostel gate.

Security at the entrance



Security at the College and Hostel entrance



Suggestion and Compliant boxes are available; students can give suggestions or file complaints against unfair practices. These are situated in every academic block to encourage students to raise their voice against discrimination.



Medical help in emergency within the campus. Any further medical help needed students or staff will be sent to care hospital near the college within radius of 1 km.

